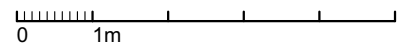
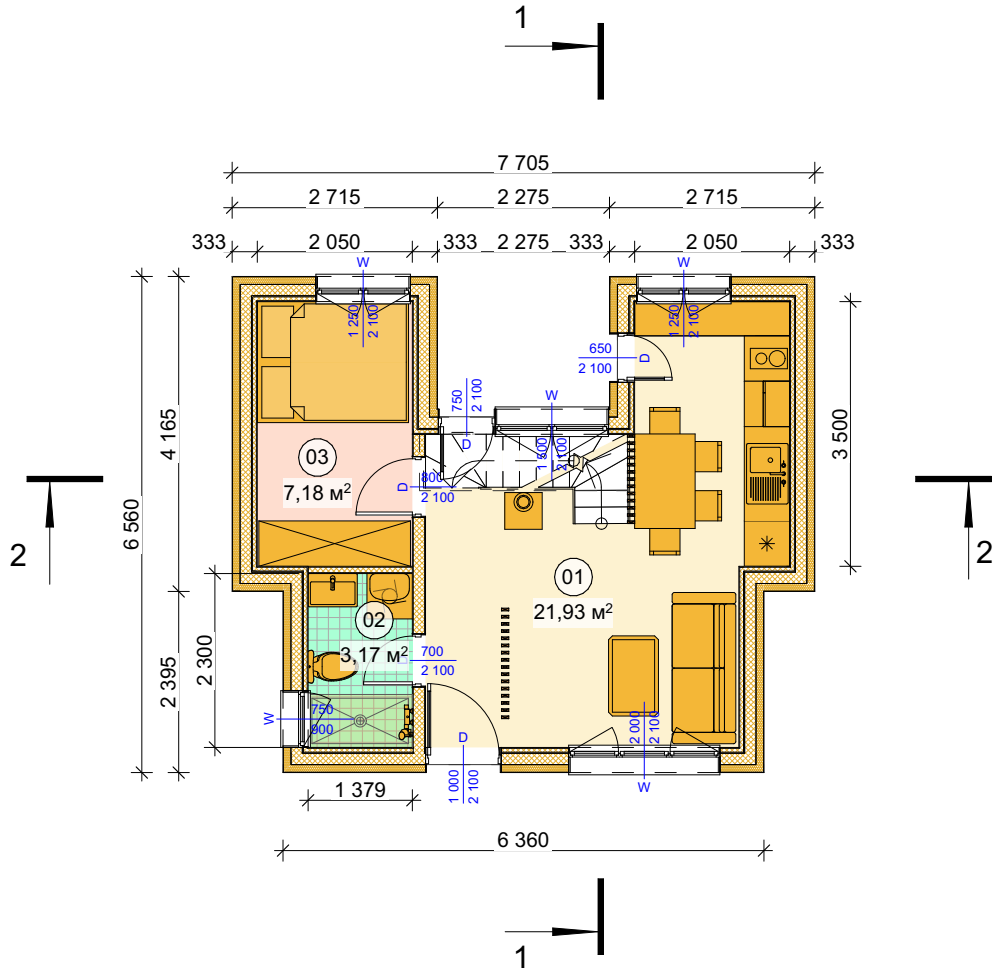
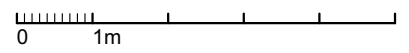
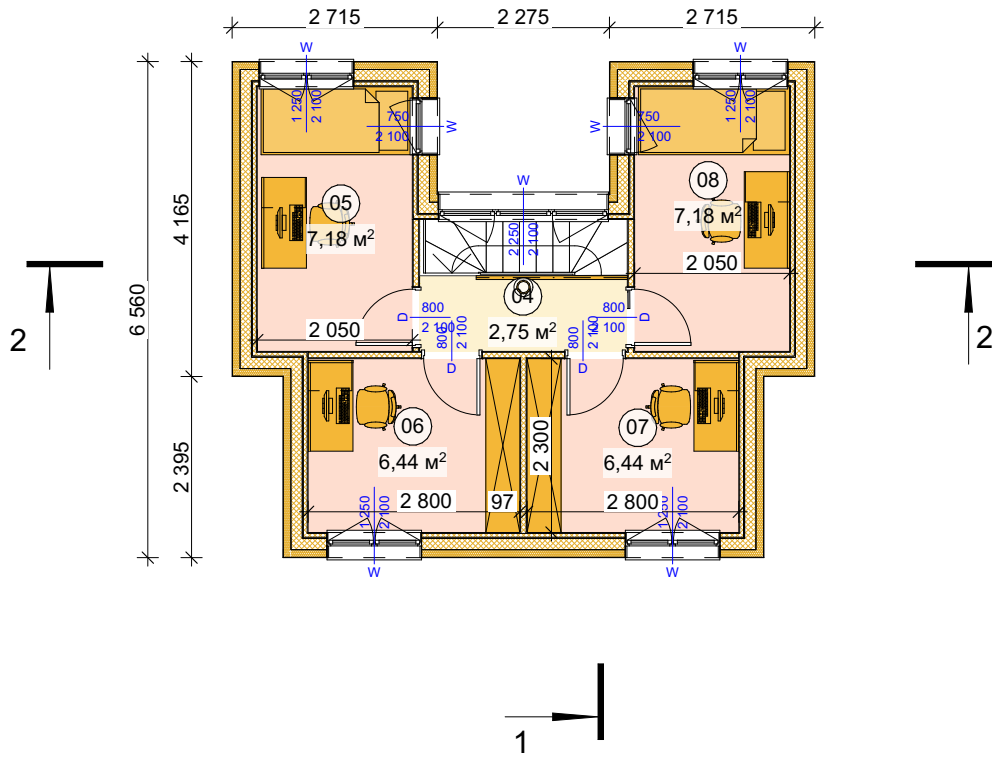


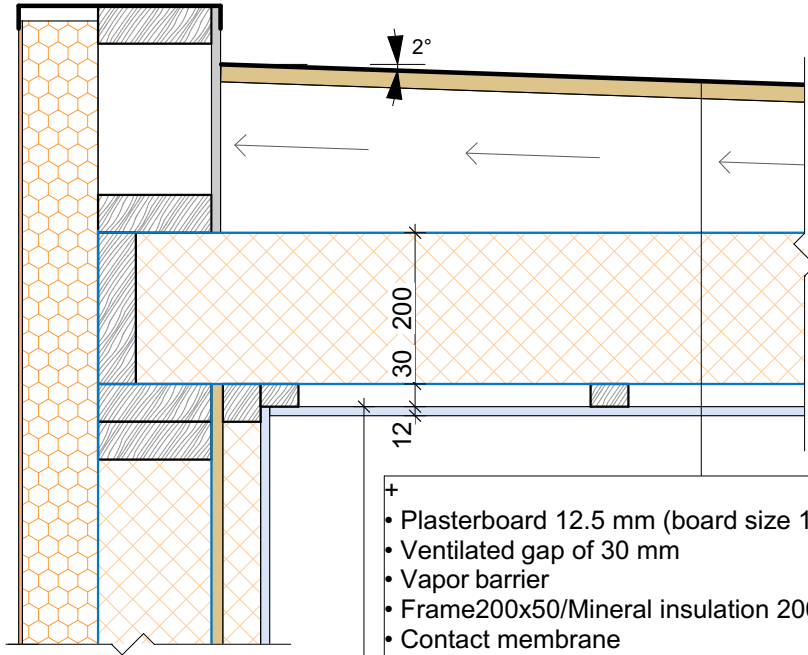
PLAN 1



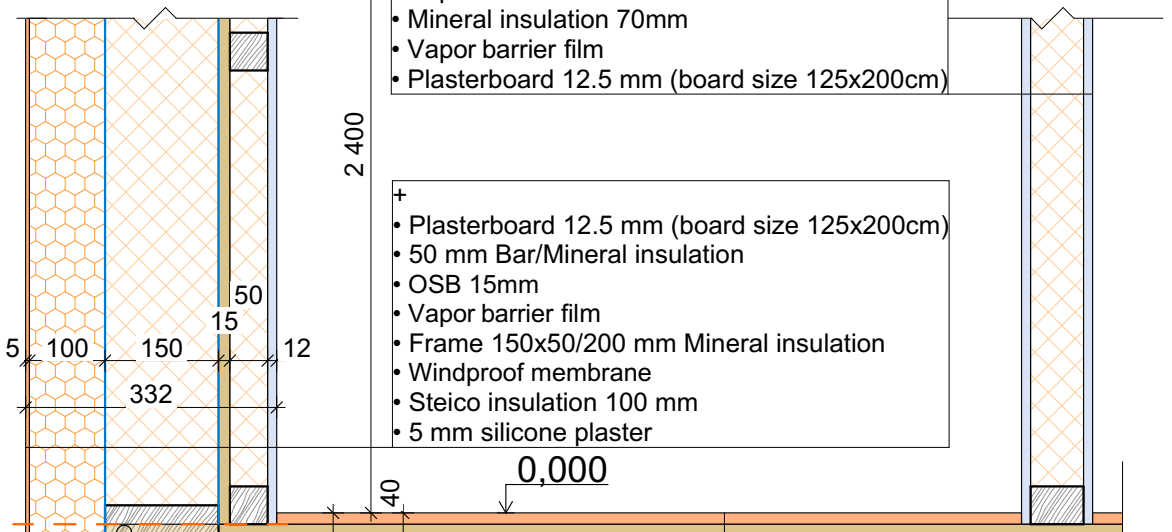
PLAN 2



NODE "A"



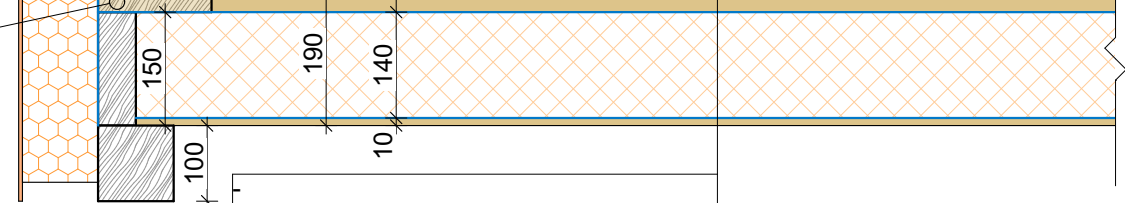
- Plasterboard 12.5 mm (board size 125x200cm)
- Ventilated gap of 30 mm
- Vapor barrier
- Frame 200x50/Mineral insulation 200mm
- Contact membrane
- Ventilated gap mm
- OSB 22 mm (board size 125x250 cm)
- Roof foil 1.1 mm



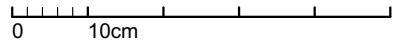
- Plasterboard 12.5 mm (board size 125x200cm)
- Vapor barrier film
- Mineral insulation 70mm
- Vapor barrier film
- Plasterboard 12.5 mm (board size 125x200cm)

- Plasterboard 12.5 mm (board size 125x200cm)
- 50 mm Bar/Mineral insulation
- OSB 15mm
- Vapor barrier film
- Frame 150x50/200 mm Mineral insulation
- Windproof membrane
- Steico insulation 100 mm
- 5 mm silicone plaster

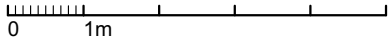
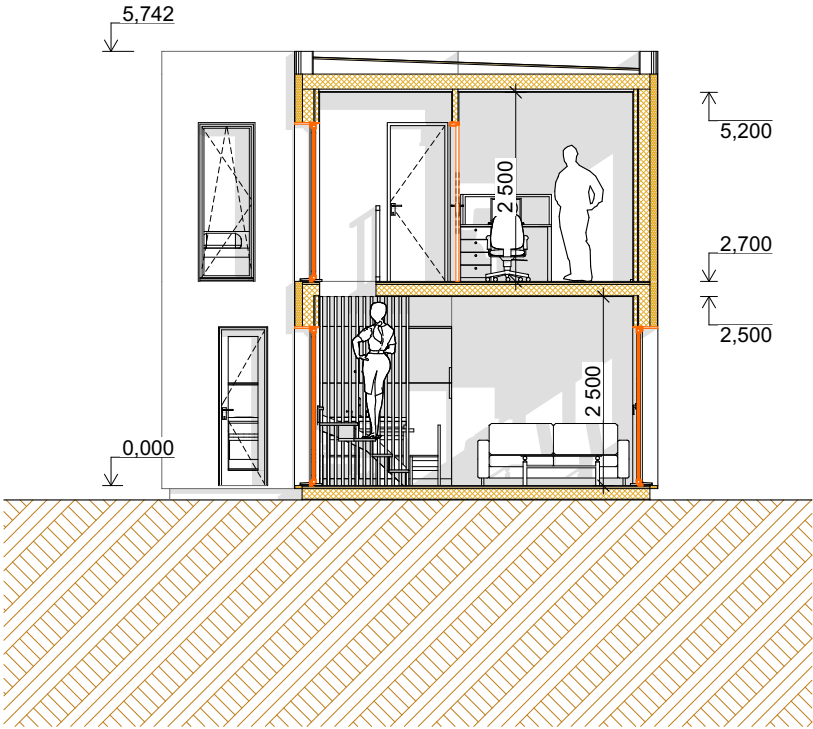
+OSB25 under the opening



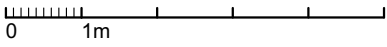
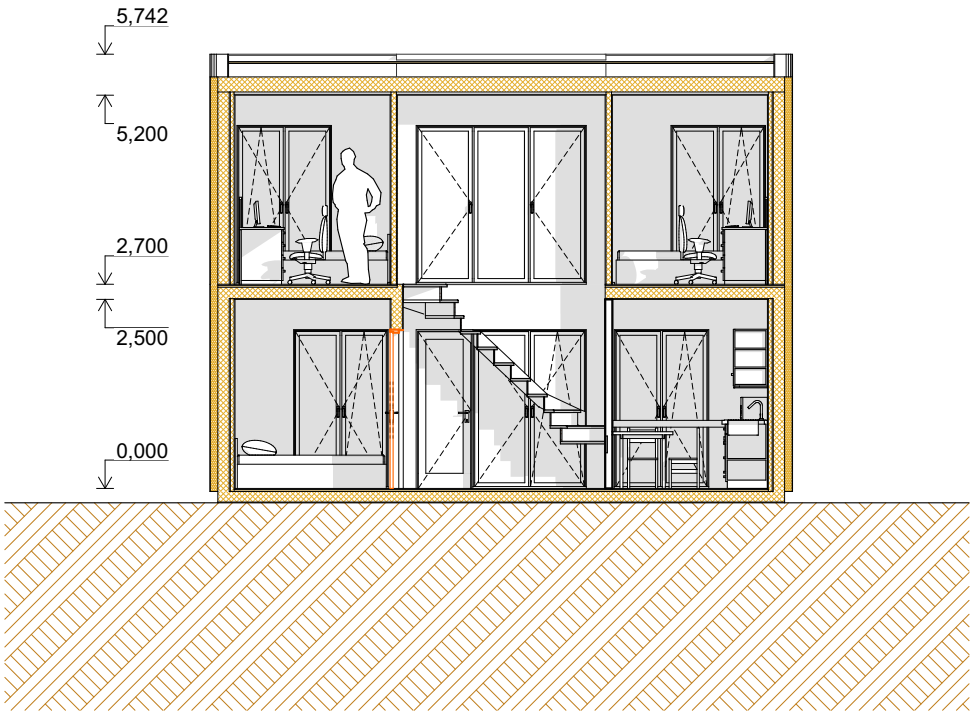
- OSB 10 mm (board size 125x250 mm)
- Frame 150x50/Mineral insulation 150mm
- OSB 25 mm (board size 125x250 mm)
- 6mm Soft foil + 9mm Parquet



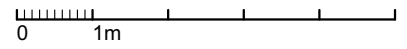
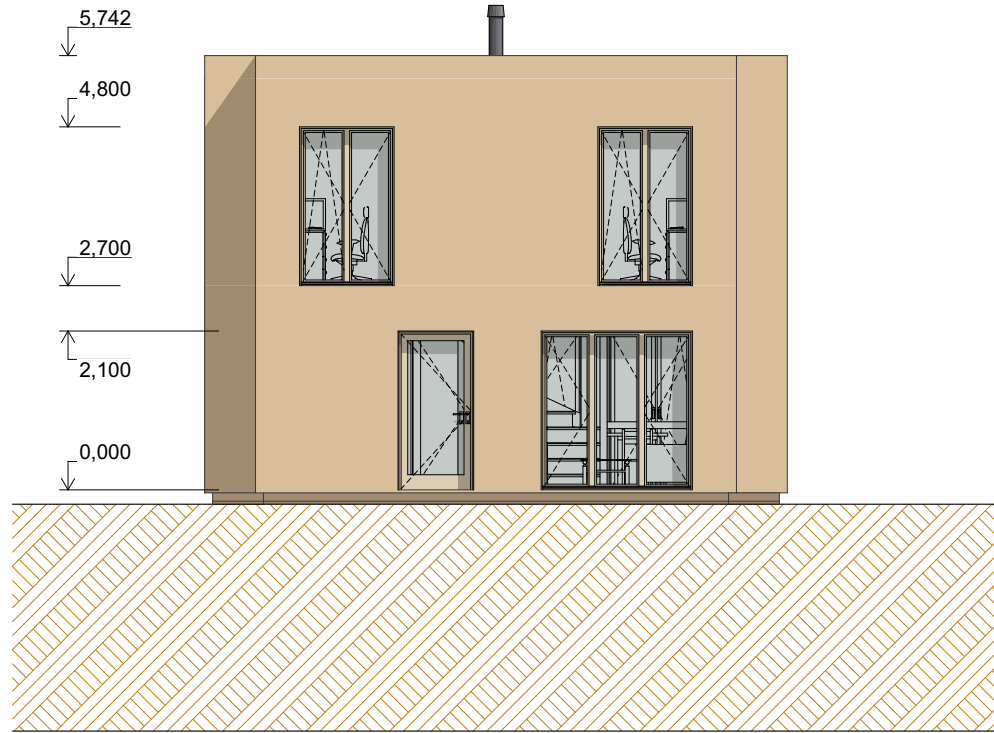
SECTION 1-1



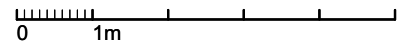
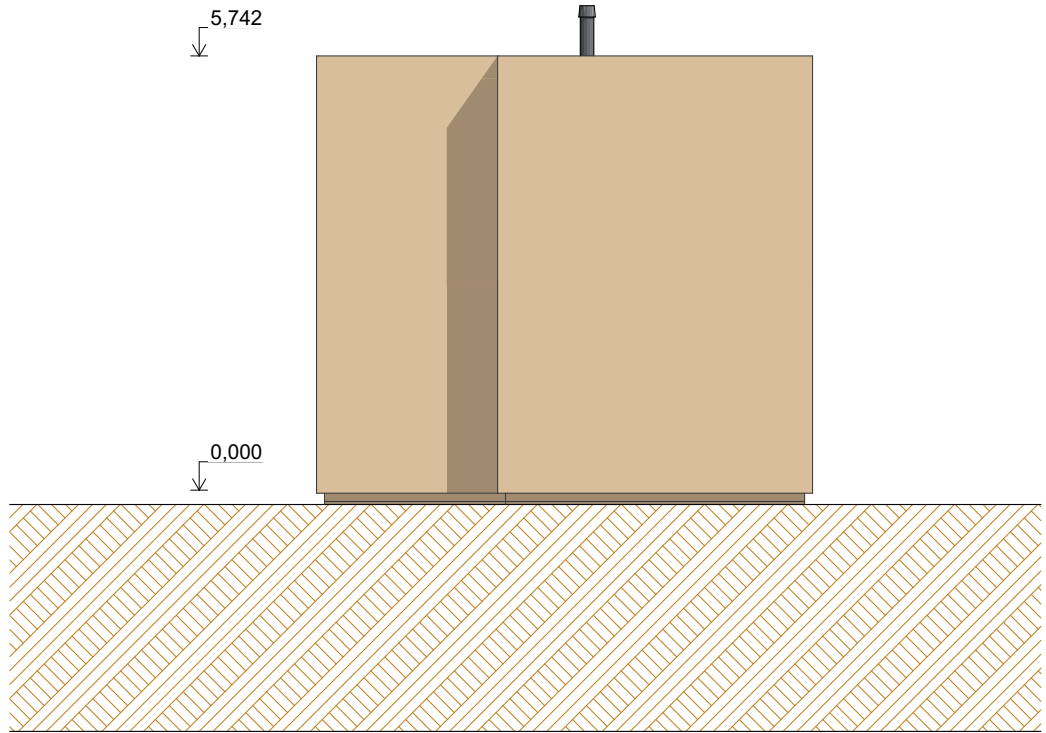
SECTION 2-2



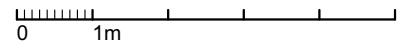
FACADE SOUTH



FACADE EAST



FACADE NORTH



FACADE WEST

